

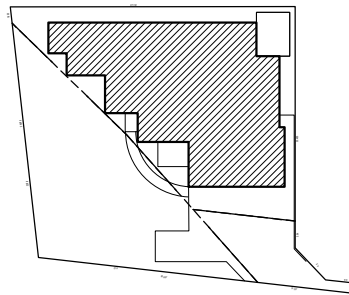
27.741



RESIDENCE 1	121.44m <sup>2</sup>
GARAGE	35.47m <sup>2</sup>
PORCH	2.15m <sup>2</sup>
ALFRESCO	7.20m <sup>2</sup>
RESIDENCE 2	73.28m <sup>2</sup>
GARAGE	18.22m <sup>2</sup>
ALFRESCO	13.85m <sup>2</sup>
TOTAL	271.61m <sup>2</sup>

HOUSE	194.72m <sup>2</sup>
PORCH	2.15m <sup>2</sup>
GARAGE	53.69m <sup>2</sup>
ALFRESCO	21.05m <sup>2</sup>
TOTAL	271.61m <sup>2</sup>

BLOCK SIZE	690m <sup>2</sup>
HOUSE AREA	248.41m <sup>2</sup>
SITE COVERAGE	36.00%
MAX. ALLOWED	55% (R30)



PROJECT: LOT 5-130 SHEFFIELD ROAD, WATTLE GROVE WA 6107

REVISION: 4

DATE: 11.05.21

SCALE: 1:100 @ A4



www.augusteproperties.com  
0417776330  
12 Mary Street, Como WA 6152, Australia.

